



GEGGUS[®]

Premium Eingangsmattensysteme
Premium Entrance Matting Systems
Tapis d'Entrée Classe Premium



REFERENCES

EDITION 2



First impressions last

GEGGUS[®]



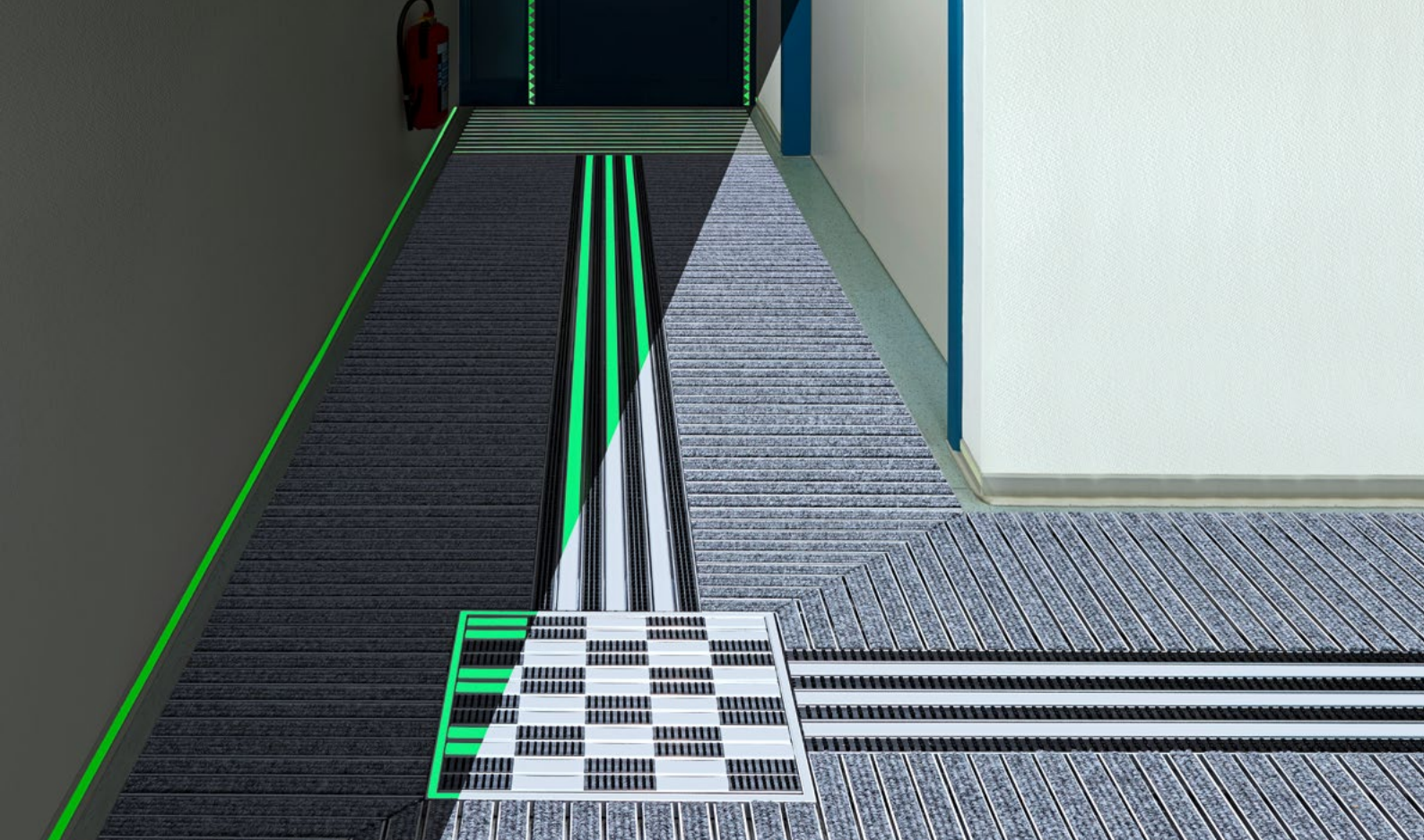
AUSGEWÄHLTE REFERENZEN
SELECTED REFERENCES
RÉFÉRENCES SÉLECTIONNÉES

Kongahälla Shopping Centre (Sweden)	4	Inselhalle Lindau (Germany)	20
GEGGUS GmbH, Weingarten (Germany)	5	Mall of Scandinavia, Solna (Sweden)	21
Technisches Rathaus, Tübingen (Germany)	6	Les Fiches Nord, Lausanne (Switzerland)	22
Marina Bay Financial Centre, Singapore	7	Westgate Shopping Centre, Singapore	23
Willibald-Gluck-Gymnasium, Neumarkt (Germany)	8	Mall of Berlin (Germany)	24
Changi Airport, Singapore	9	A-Hus, Oslo (Norway)	25
Kundencenter Daimler AG, Sindelfingen (Germany)	10	Ingangsparti Statoil Fornebu, Oslo (Norwegen)	26
Mölnadal Galeria, Shopping Mall, Mölnadal (Sweden)	11	ICC Hotel, Geneva (Switzerland)	27
EKZ Forum, Stein (Germany)	12	Ferrari Showroom, Bologna (Italy)	28
Volksbank Weingarten (Germany)	13	Universal Studios, Singapore	29
Volksbank Hamburg (Germany)	14	Suntec Convention Hall, Singapore	30
Sparkasse Weingarten (Germany)	15	Stadthalle, Balingen (Germany)	31
Jaguar Show Room Geisser, Karlsruhe (Germany)	16	Niedersächsischer Landtag, Hannover (Germany)	32
ATRIUM, Ettlingen (Germany)	17	Autohaus Geisser, Karlsruhe (Germany)	33
Robinson Shopping Centre, Orchard Road, Singapore	18	Messestand BAU Messe, München (Germany)	34



Kongahälla Shopping Centre (Sweden)

Top Clean TREND 22: Ripseinlage (anthrazit) mit Bürstenprofil (schwarz) und Kunststoffprofil (hellgrau) als taktiles Leitsystem · Ribbed carpet (anthracite) with cassette brush (black) and plastic profile (light grey) as tactile guidance system · Finition reps (anthracite) avec profilé brosses (noir) et profilé plastique (gris clair) comme système de guidage tactile



GEGGUS GmbH, Weingarten (Germany)

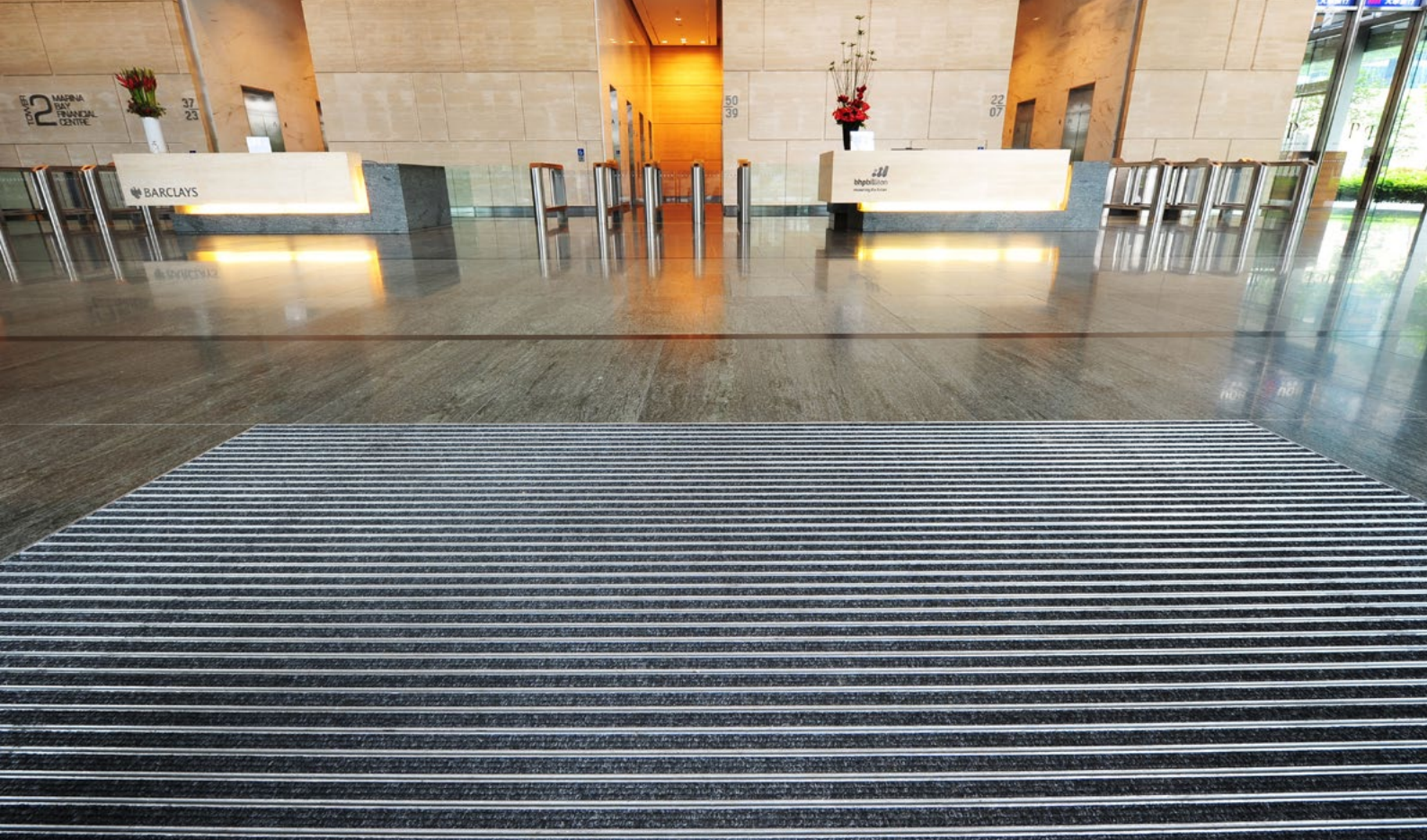
Safe Clean TREND 22: Ripseinlage (hellgrau) und Bürstenprofil (schwarz) im Wechsel mit phosphoreszierenden Profilen ·
Ribbed carpet (light grey) and cassette brush (black) alternating with phosphorescent profiles ·
Finition reps (gris clair) en alternance avec profilé brosses (noir) et profilés phosphorescents



6

Technisches Rathaus, Tübingen (Germany)

Top Clean TREND 22: Ripseinlage (hellgrau) · Ribbed carpet (light grey) · Finition reps (gris clair)



Marina Bay Financial Centre, Singapore
Top Clean TREND 22: Ripseinlage (anthrazit) · Ribbed carpet (anthracite) · Finition reps (anthracite)





Changi Airport, Singapore
Top Clean STABIL 17: Gummiprofil (schwarz) · Grooved rubber (black) · Finition caoutchouc (noir)





Mölndal Galeria, Shopping Mall, Mölndal (Sweden)
Top Clean TREND 22: Ripseinlage (anthrazit) · Ribbed carpet (anthracite) · Finition reps (anthracite)





Volksbank Weingarten (Germany)

Top Clean TREND 22: Gummiprofil (schwarz) im Wechsel mit Bürstenprofil (schwarz) · Grooved rubber (black) alternating with cassette brush (black) · Finition caoutchouc (noir) en alternance avec profilé brosse (noir)





Sparkasse Weingarten (Germany)

Top Clean TREND 22: Ripseinlage (schwarz) mit Bürstenprofil (schwarz) · Ribbed carpet (black) with cassette brush (black) · Finition reps (noir) avec profilé brosse (noir)





ATRIUM, Ettlingen (Germany)
Top Clean TREND 22 XL: Ripseinlage (anthrazit) · Ribbed carpet (anthracite) · Finition reps (anthracite)





**Inselhalle Lindau (Germany)**

Top Clean STABIL 22: Ripseinlage (hellgrau) mit taktilem Leitsystem aus Bürstenprofil (schwarz) ·

Ribbed carpet (light grey) with tactile guidance system with cassette brush (black) ·

Finition reps (gris clair) avec système de guidage tactile en profilé brosse (noir)



Mall of Scandinavia, Solna (Sweden)

Top Clean STABIL 22: Gummiprofil (schwarz) im Wechsel mit Rips (anthrazit) · Grooved rubber (black) alternating with ribbed carpet (anthracite) · Finition caoutchouc (noir) en alternance avec reps (anthracite)





Westgate Shopping Centre, Singapore
Top Clean TREND XL 22: Ripseinlage (anthrazit) · Ribbed carpet (anthracite) · Finition reps (anthracite)





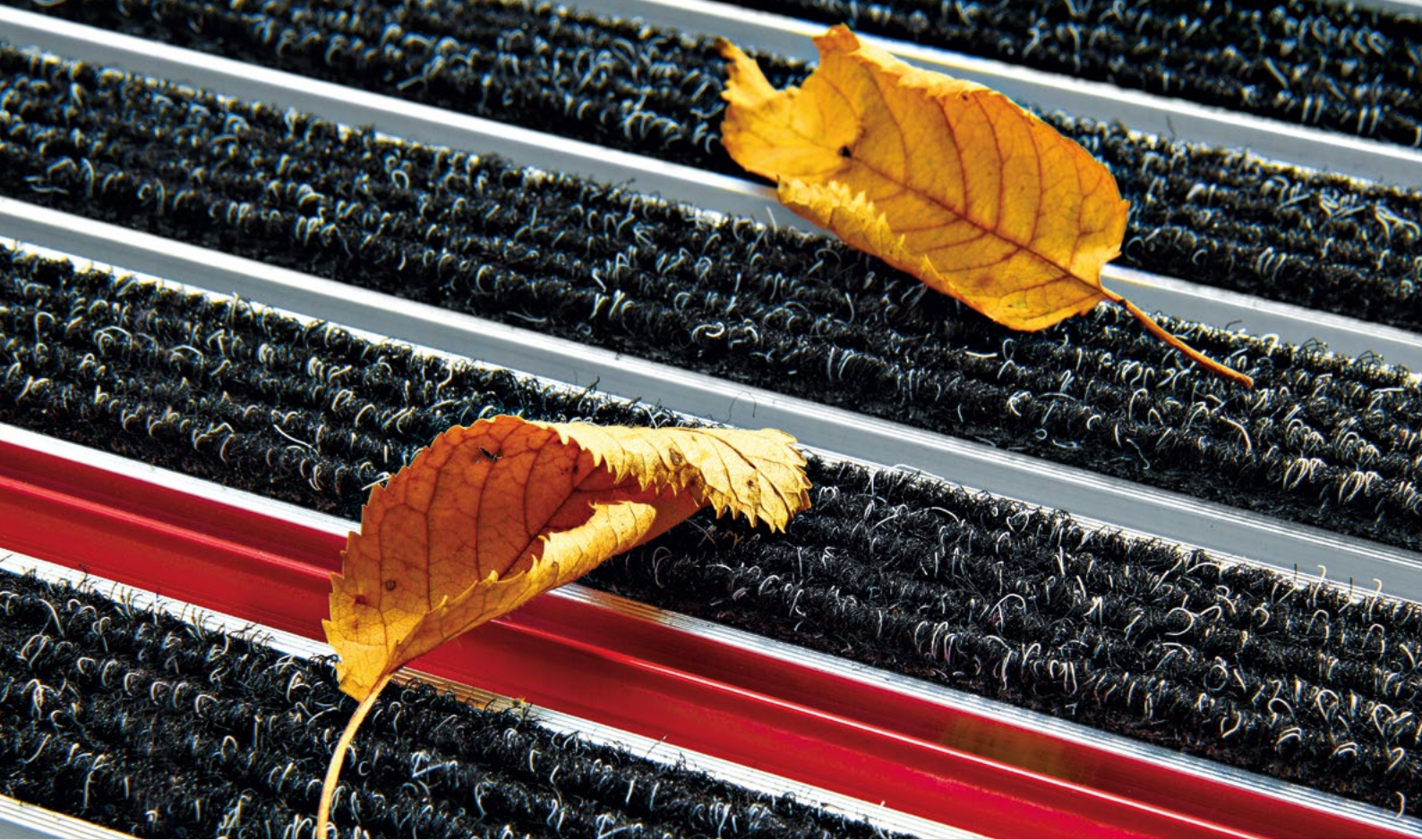
A-Hus, Oslo (Norway)
Top Clean TREND 22: Ripseinlage (anthrazit) · Ribbed carpet (anthracite) · Finition reps (anthracite)

**Inngangsparti Statoil Fornebu, Oslo (Norwegen)**

Top Clean TREND 17: Gummiprofil (schwarz) im Wechsel mit Bürstenprofil (schwarz) · Grooved rubber (black) alternating with cassette brush (black) · Finition caoutchouc (noir) en alternance avec profilé brosse (noir)



ICC Hotel, Geneva (Switzerland)
Top Clean TREND 27: Ripseinlage (braun/hellgrau), Intarsientechnik · Ribbed carpet (brown/light grey), inlaid work ·
Finition reps (brun/gris clair), incrustation technique marqueterie





Universal Studios, Singapore

Top Clean TREND 10: Ripseinlage (rot) im Wechsel mit Kratzleisten · Ribbed carpet (red) alternating with scraper bars · Finition reps (rouge) en alternance avec grattoirs



Suntec Convention Hall, Singapore

Top Clean TREND 10: Ripseinlage (anthrazit) im Wechsel mit Ripseinlage (hellgrau) · Ribbed carpet (anthracite) alternating with ribbed carpet (light grey) · Finition reps (anthracite) en alternance avec finition reps (gris clair)



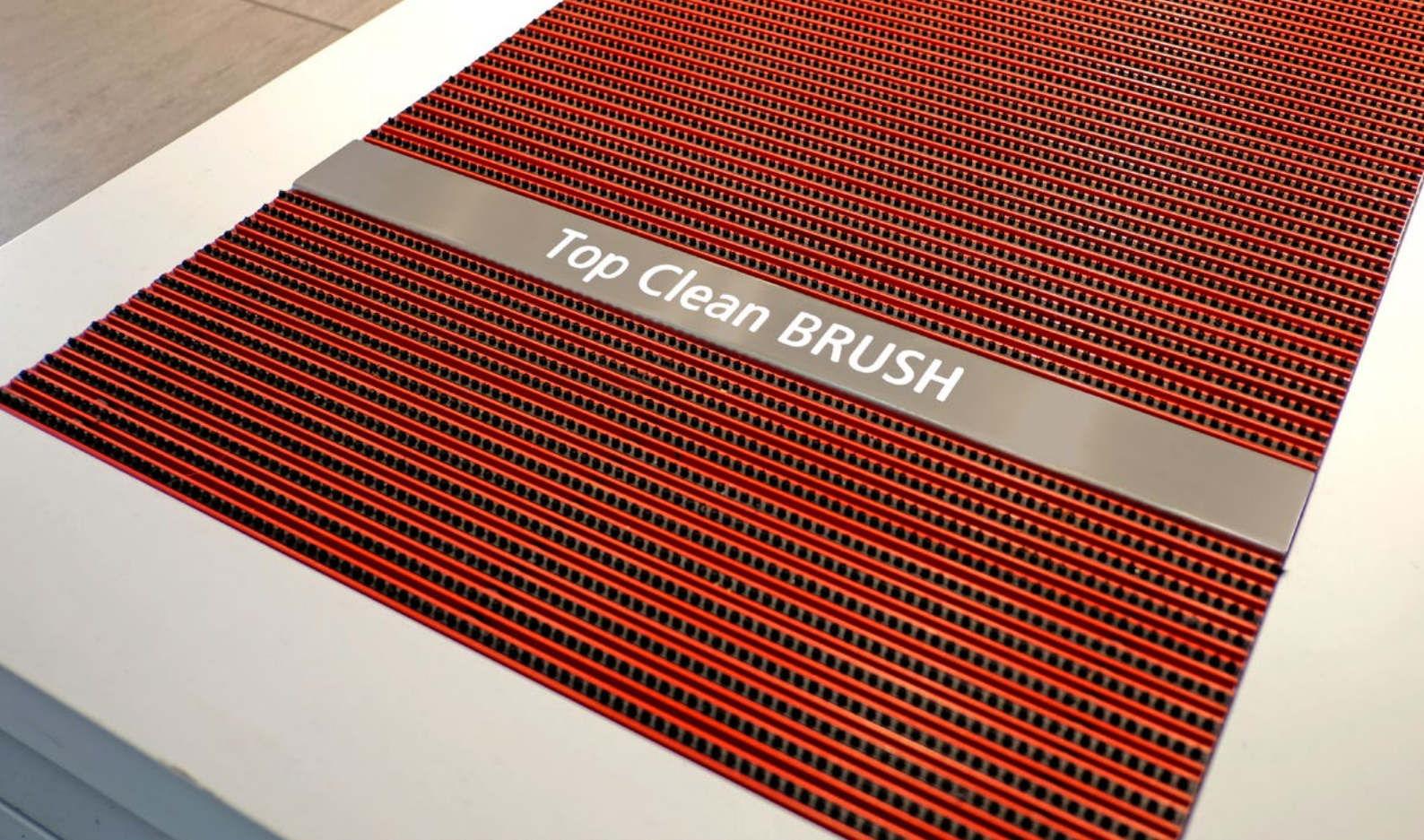
Stadthalle, Balingen (Germany)

Top Clean TREND 22: Ripseinlage (schwarz) im Wechsel mit Bürstenleiste (schwarz) · Ribbed carpet (black) alternating with brush strip (black) · Finition reps (noir) en alternance avec rangée de brosse (noir)





Autohaus Geisser, Karlsruhe (Germany)
Top Clean TREND 22: Ripseinlage (anthrazit) · Ribbed carpet (anthracite) · Finition reps (anthracite)

**Messestand BAU Messe, München (Germany)**

Top Clean BRUSH 22: Bürstenleisten (schwarz) mit rot pulverbeschichtetem Aluprofil und hinterleuchteter Logoschiene ·
Brush strips (black) with red powder-coated aluminium profile and backlit logo bar · Finition rangée de brosses (noir) avec
thermolaquage rouge des profilés en profilé logo lumineux

